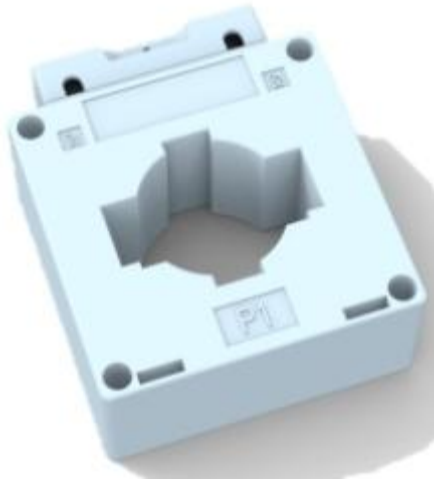


TR-BH0.66-50



Products Features

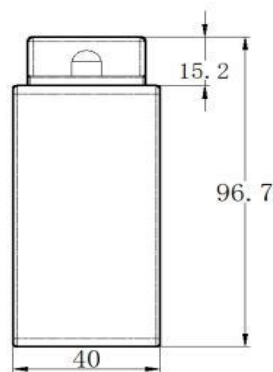
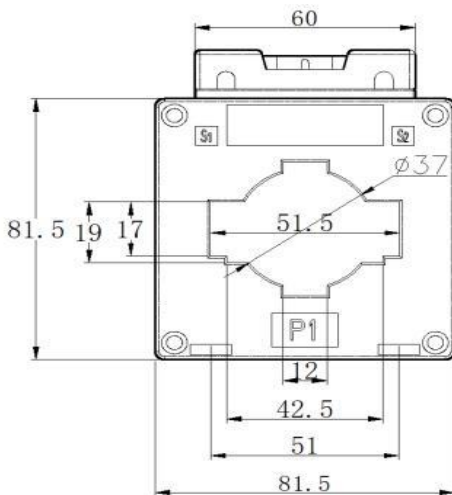
TR-BH and TR-SDH series current transformers have the characteristics of low price, high performance index, flexible installation mode and strong applicability, and can also be customized according to users' needs.

Application

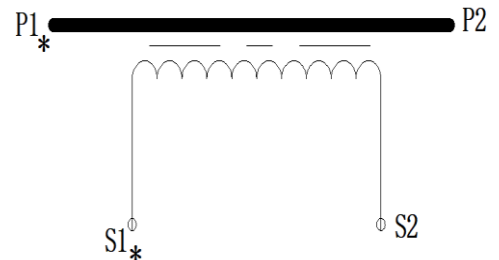
TR-BH and TR-SDH series current transformers are used in the protection test of GCS low-voltage draw-out switchgear, domino combined switchgear and high-power electrical equipment, and are suitable for AC circuits with rated voltage below 0.66kV.

Mechanical dimension

Dimension (mm)



Electrical schematic diagram





Technical data

Transformation Ratio	200/5(1)A	300/5(1)A	400/5(1)A	600/5(1)A	800/5(1)A
Rated Capacity(1.0 class)	5VA	5VA	5VA	5VA	10VA
Rated Capacity(0.5 class)	3.7VA	5VA	5VA	5VA	10VA
Rated Capacity(0.5S class)	2.5VA	5VA	5VA	5VA	10VA
Rated Capacity(0.2 class)	2.5VA	5VA	5VA	5VA	10VA
Rated Capacity(0.2S class)	2.5VA	5VA	5VA	5VA	10VA
Frequency	50Hz/60Hz				
Inner Diameter	37mm				
Tolerance	±1.5mm				
Power Frequency Withstand Voltage	3kV AC/1min				
Ambient Operating Temperature	-25°C~70°C				
Ambient Storage Temperature	-40°C~75°C				

Contact information

HUBEI TIANRUI ELECTRONIC CO.,LTD.

Add: No.8 Chuangye Road, Economic Development Zone, Tianmen 431700, Hubei, China

Website: www.hbtrec.com

Email: export@hbtianrui.com